

Table 1: Los Alamos County, NM Community Development Goal Rankings

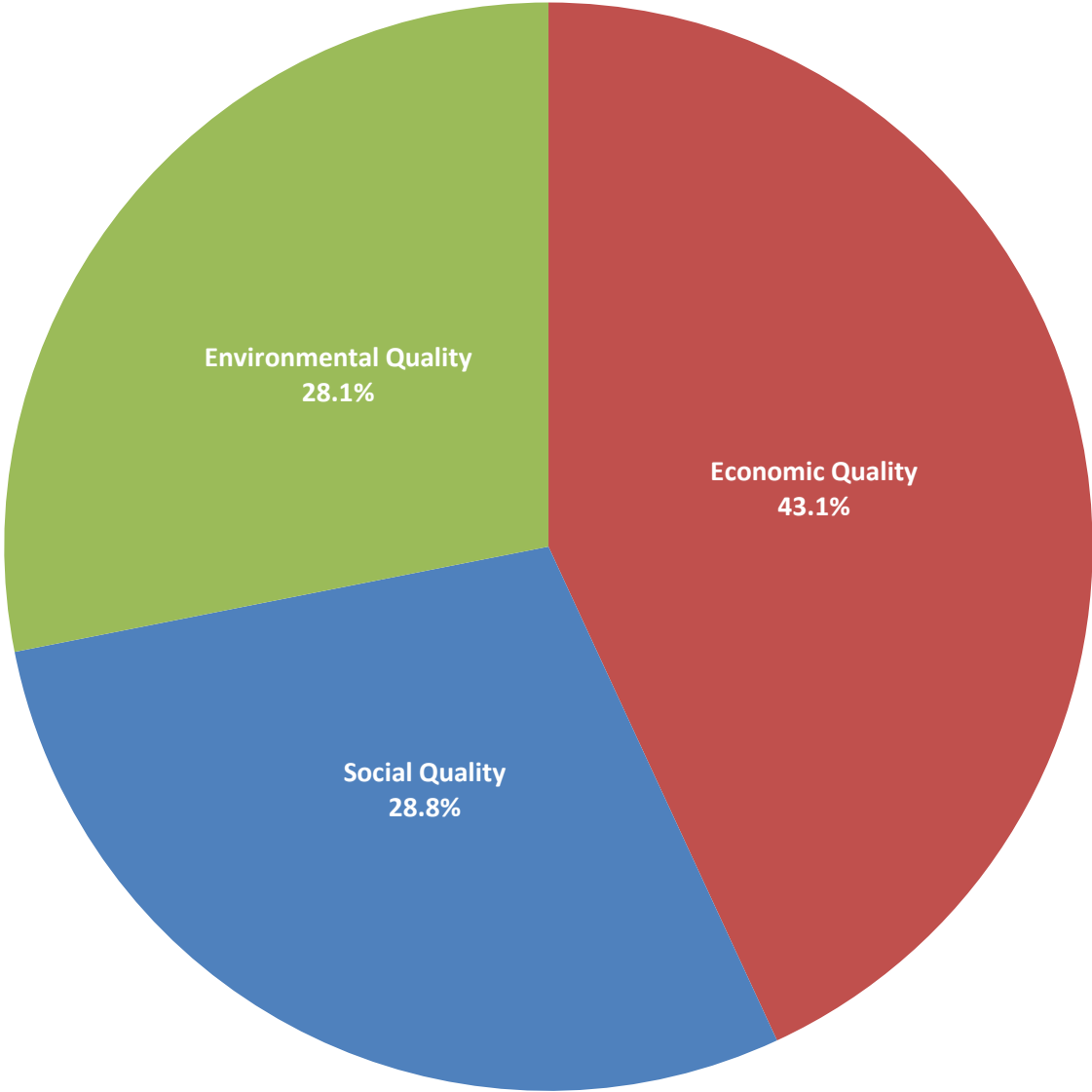
<i>Goal</i>	<i>Weight</i>	<i>Rank</i>
Economic Quality	43.10%	1
Environmental Quality	28.10%	3
Social Quality	28.80%	2

Table 2: Community Development Indicator Rankings

<i>Indicator</i>	<i>Weight</i>	<i>Rank</i>
G1.I1 - Every new job generates additional jobs in the community	7.67%	3
G1.I2 - New businesses return profits to the community	11.85%	1
G1.I3 - New businesses hire locally	7.63%	4
G1.I4 - New businesses buy locally	8.84%	2
G1.I5 - New businesses increase the average local wage	7.11%	6
G2.I1 - New businesses do not pollute the water	7.00%	7
G2.I2 - New businesses do not release toxic chemicals in the air	6.49%	9
G2.I3 - New businesses are in compliance with hazardous waste management	6.46%	10
G2.I4 - New businesses do not emit greenhouse gas	5.31%	12
G2.I5 - New businesses do not develop undeveloped land	2.84%	15
G3.I1 - New businesses increase the local tax base	7.52%	5
G3.I2 - New jobs are full-time	3.97%	14
G3.I3 - New jobs offer benefits (health and/or retirement)	6.88%	8
G3.I4 - New jobs provide training programs	4.00%	13
G3.I5 - New businesses support community activities	6.42%	11

Number of observations	13
------------------------	----

**Figure 1: Community Development Goal Weights:
Los Alamos County, NM**



**Figure 2: Community Development Indicator Weights:
Los Alamos County, NM**

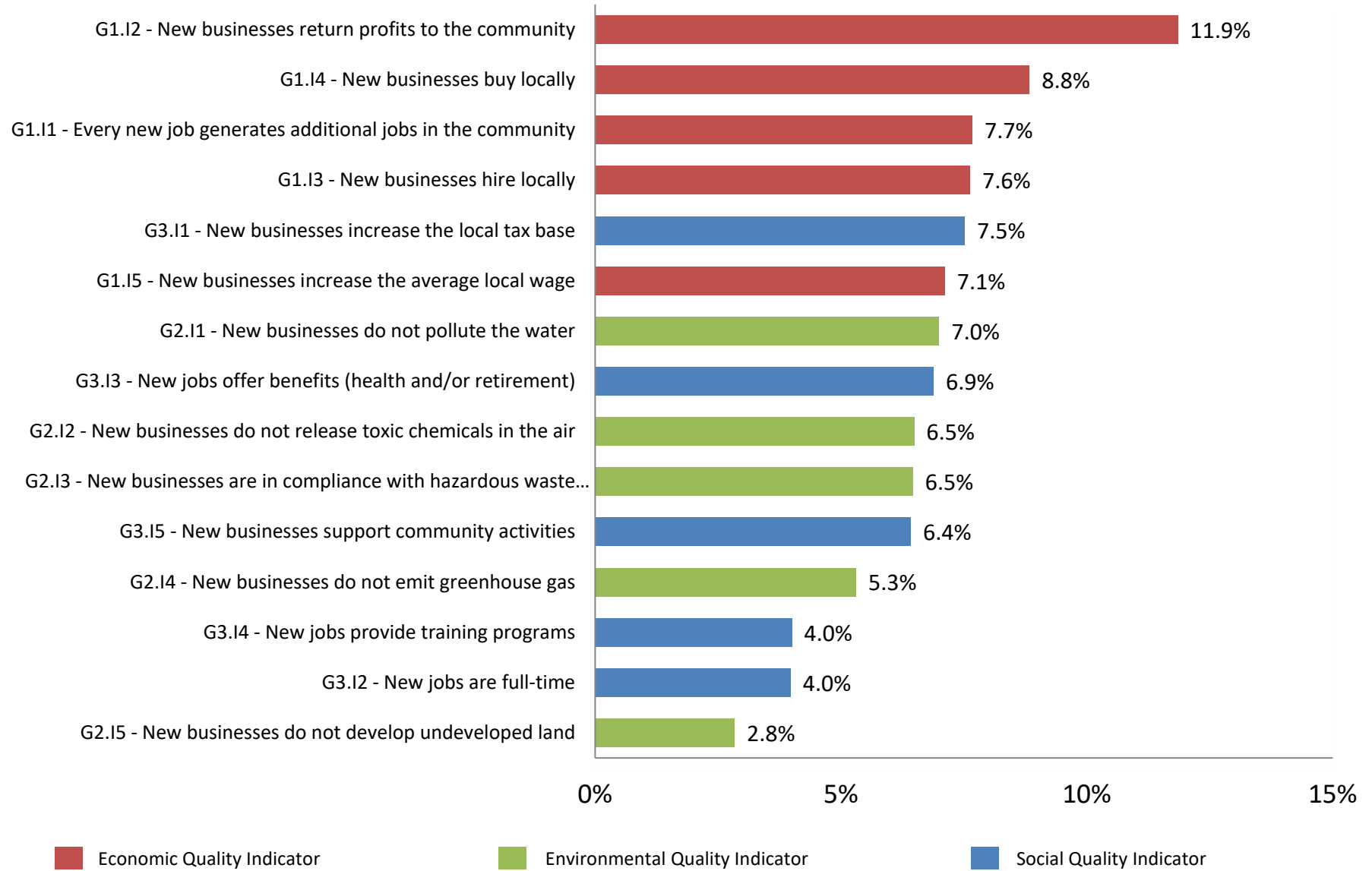
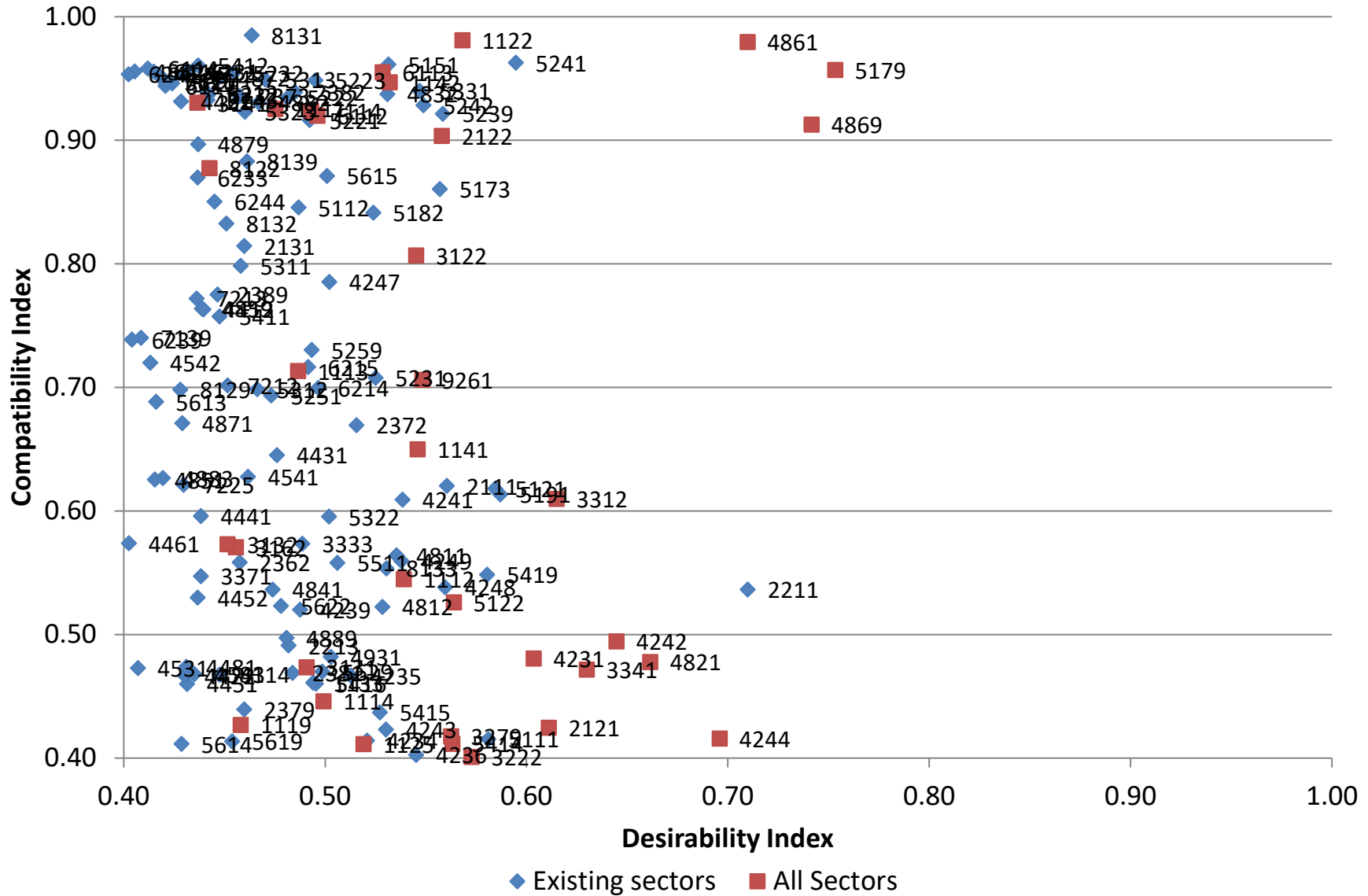


Figure 4: Los Alamos County, NM ASAP Results
High Index NAICS



**Figure 5: Los Alamos County, NM ASAP Results
Target NAICS**

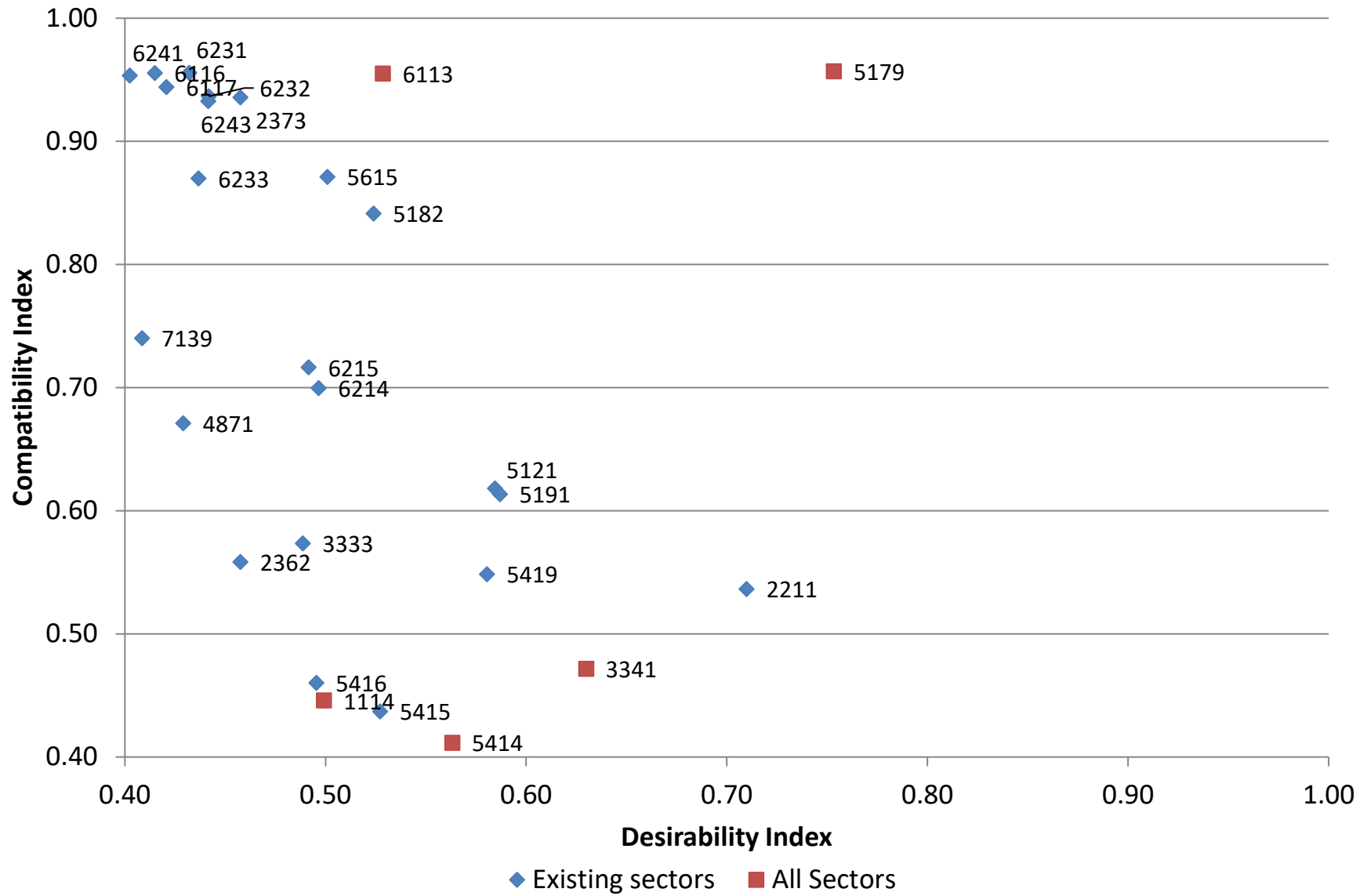


Table 3: Industries with High Desirability and Compatibility Index Scores (Index > .40)

NAICS4	Description	Existing	DI	CI
2212	Natural Gas Distribution		0.7982	0.2321
3344	Semiconductor and Other Electronic Component Manufacturing		0.7970	0.1845
5179	Other Telecommunications		0.7534	0.9569
4869	Other Pipeline Transportation		0.7416	0.9126
3241	Petroleum and Coal Products Manufacturing	X	0.7400	0.3731
4862	Pipeline Transportation of Natural Gas		0.7344	0.0000
3254	Pharmaceutical and Medicine Manufacturing		0.7281	0.0000
2211	Electric Power Generation, Transmission and Distribution	X	0.7099	0.5365
4861	Pipeline Transportation of Crude Oil		0.7098	0.9795
3256	Soap, Cleaning Compound, and Toilet Preparation Manufacturing		0.7052	0.1040
4244	Grocery and Related Product Merchant Wholesalers		0.6959	0.4158
5152	Cable and Other Subscription Programming		0.6755	0.3886
3345	Navigational, Measuring, Electromedical, and Control Instruments Manufacturing		0.6722	0.1428
3252	Resin, Synthetic Rubber, and Artificial and Synthetic Fibers and Filaments Manufacturing		0.6652	0.2675
4821	Rail Transportation		0.6615	0.4778
4242	Drugs and Druggists' Sundries Merchant Wholesalers		0.6447	0.4945
3315	Foundries		0.6445	0.1681
3251	Basic Chemical Manufacturing		0.6443	0.1552
3255	Paint, Coating, and Adhesive Manufacturing		0.6411	0.0598
3313	Alumina and Aluminum Production and Processing		0.6371	0.0618
3253	Pesticide, Fertilizer, and Other Agricultural Chemical Manufacturing		0.6363	0.2309
3341	Computer and Peripheral Equipment Manufacturing		0.6299	0.4717
3273	Cement and Concrete Product Manufacturing		0.6296	0.2247
3115	Dairy Product Manufacturing		0.6278	0.3143
3353	Electrical Equipment Manufacturing		0.6248	0.2846
3312	Steel Product Manufacturing from Purchased Steel		0.6150	0.6098
3339	Other General Purpose Machinery Manufacturing		0.6115	0.0884
2121	Coal Mining		0.6111	0.4245
3331	Agriculture, Construction, and Mining Machinery Manufacturing		0.6064	0.2299
4231	Motor Vehicle and Motor Vehicle Parts and Supplies Merchant Wholesalers		0.6036	0.4806
3342	Communications Equipment Manufacturing	X	0.6028	0.3961
3112	Grain and Oilseed Milling		0.6012	0.3575
5417	Scientific Research and Development Services	X	0.6008	0.3877
3116	Animal Slaughtering and Processing		0.5994	0.1342
3343	Audio and Video Equipment Manufacturing		0.5960	0.2850
5241	Insurance Carriers	X	0.5947	0.9628
3221	Pulp, Paper, and Paperboard Mills		0.5919	0.2315
3346	Manufacturing and Reproducing Magnetic and Optical Media		0.5903	0.2749
3364	Aerospace Product and Parts Manufacturing		0.5892	0.3357
3361	Motor Vehicle Manufacturing		0.5875	0.1358
5191	Other Information Services	X	0.5869	0.6135
5121	Motion Picture and Video Industries	X	0.5845	0.6181
3111	Animal Food Manufacturing		0.5831	0.0860
3113	Sugar and Confectionery Product Manufacturing	X	0.5814	0.0954
5111	Newspaper, Periodical, Book, and Directory Publishers	X	0.5811	0.4155
5419	Other Professional, Scientific, and Technical Services	X	0.5805	0.5485
3336	Engine, Turbine, and Power Transmission Equipment Manufacturing		0.5783	0.0713
3314	Nonferrous Metal (except Aluminum) Production and Processing	X	0.5751	0.1400
3222	Converted Paper Product Manufacturing		0.5727	0.4010
3212	Veneer, Plywood, and Engineered Wood Product Manufacturing		0.5723	0.1405
3332	Industrial Machinery Manufacturing		0.5721	0.1360
3114	Fruit and Vegetable Preserving and Specialty Food Manufacturing		0.5708	0.0000

Table 3: Industries with High Desirability and Compatibility Index Scores (Index > .40)

NAICS4	Description	Existing	DI	CI
1122	Hog and Pig Farming		0.5682	0.9810
5321	Automotive Equipment Rental and Leasing		0.5661	0.0000
3391	Medical Equipment and Supplies Manufacturing		0.5650	0.2922
5122	Sound Recording Industries		0.5639	0.5261
3363	Motor Vehicle Parts Manufacturing		0.5637	0.1187
3274	Lime and Gypsum Product Manufacturing		0.5633	0.1551
5414	Specialized Design Services		0.5632	0.4116
3279	Other Nonmetallic Mineral Product Manufacturing		0.5626	0.4177
2123	Nonmetallic Mineral Mining and Quarrying	X	0.5616	0.3472
3328	Coating, Engraving, Heat Treating, and Allied Activities		0.5613	0.2864
3117	Seafood Product Preparation and Packaging		0.5609	0.2100
2111	Oil and Gas Extraction	X	0.5605	0.6203
3325	Hardware Manufacturing		0.5599	0.2599
4248	Beer, Wine, and Distilled Alcoholic Beverage Merchant Wholesalers	X	0.5596	0.5382
3311	Iron and Steel Mills and Ferroalloy Manufacturing		0.5589	0.0000
5239	Other Financial Investment Activities	X	0.5584	0.9215
2122	Metal Ore Mining		0.5580	0.9035
5173	Wired and Wireless Telecommunications Carriers	X	0.5570	0.8605
3259	Other Chemical Product and Preparation Manufacturing	X	0.5562	0.2613
3211	Sawmills and Wood Preservation	X	0.5539	0.1192
5242	Agencies, Brokerages, and Other Insurance Related Activities	X	0.5488	0.9284
3322	Cutlery and Handtool Manufacturing		0.5483	0.2177
9261	Administration of Economic Programs		0.5483	0.7062
5331	Lessors of Nonfinancial Intangible Assets (except Copyrighted Works)	X	0.5470	0.9400
3362	Motor Vehicle Body and Trailer Manufacturing		0.5462	0.0970
1141	Fishing		0.5460	0.6498
3122	Tobacco Manufacturing		0.5452	0.8068
4236	Household Appliances and Electrical and Electronic Goods Merchant Wholesalers	X	0.5452	0.4026
3365	Railroad Rolling Stock Manufacturing		0.5441	0.2509
1112	Vegetable and Melon Farming		0.5391	0.5448
5413	Architectural, Engineering, and Related Services	X	0.5388	0.3730
4241	Paper and Paper Product Merchant Wholesalers	X	0.5384	0.6092
3219	Other Wood Product Manufacturing		0.5381	0.1052
4249	Miscellaneous Nondurable Goods Merchant Wholesalers	X	0.5378	0.5597
5418	Advertising, Public Relations, and Related Services	X	0.5359	0.3445
4811	Scheduled Air Transportation	X	0.5355	0.5641
3271	Clay Product and Refractory Manufacturing		0.5342	0.3391
1142	Hunting and Trapping		0.5321	0.9469
2361	Residential Building Construction	X	0.5319	0.2001
5151	Radio and Television Broadcasting	X	0.5314	0.9613
4832	Inland Water Transportation	X	0.5309	0.9374
8133	Social Advocacy Organizations	X	0.5304	0.5535
4243	Apparel, Piece Goods, and Notions Merchant Wholesalers	X	0.5302	0.4232
6113	Colleges, Universities, and Professional Schools	X	0.5286	0.9550
4812	Nonscheduled Air Transportation	X	0.5284	0.5224
5415	Computer Systems Design and Related Services	X	0.5272	0.4370
5231	Securities and Commodity Contracts Intermediation and Brokerage	X	0.5251	0.7078
3352	Household Appliance Manufacturing		0.5250	0.1895
3326	Spring and Wire Product Manufacturing		0.5242	0.1484
5182	Data Processing, Hosting, and Related Services	X	0.5239	0.8414
3335	Metalworking Machinery Manufacturing		0.5233	0.0955
3321	Forging and Stamping		0.5230	0.0000

Table 3: Industries with High Desirability and Compatibility Index Scores (Index > .40)

NAICS4	Description	Existing	DI	CI
3399	Other Miscellaneous Manufacturing	X	0.5225	0.1700
4246	Chemical and Allied Products Merchant Wholesalers	X	0.5219	0.2234
4234	Professional and Commercial Equipment and Supplies Merchant Wholesalers	X	0.5208	0.4141
3262	Rubber Product Manufacturing		0.5203	0.3963
3323	Architectural and Structural Metals Manufacturing		0.5192	0.0853
1125	Aquaculture		0.5190	0.4113
3334	Ventilation, Heating, Air-Conditioning, and Commercial Refrigeration Equipment Manufacturing		0.5189	0.1394
4237	Hardware, and Plumbing and Heating Equipment and Supplies Merchant Wholesalers	X	0.5184	0.2197
4233	Lumber and Other Construction Materials Merchant Wholesalers	X	0.5174	0.3420
2383	Building Finishing Contractors	X	0.5169	0.0000
4238	Machinery, Equipment, and Supplies Merchant Wholesalers	X	0.5158	0.1848
2372	Land Subdivision	X	0.5155	0.6695
3272	Glass and Glass Product Manufacturing		0.5137	0.1707
3351	Electric Lighting Equipment Manufacturing		0.5136	0.3495
4235	Metal and Mineral (except Petroleum) Merchant Wholesalers	X	0.5127	0.4668
1124	Sheep and Goat Farming		0.5110	0.3403
3379	Other Furniture Related Product Manufacturing		0.5109	0.3608
3359	Other Electrical Equipment and Component Manufacturing	X	0.5101	0.2119
3329	Other Fabricated Metal Product Manufacturing		0.5067	0.3099
5511	Management of Companies and Enterprises	X	0.5061	0.5581
3366	Ship and Boat Building		0.5051	0.1496
3324	Boiler, Tank, and Shipping Container Manufacturing		0.5035	0.1421
4245	Farm Product Raw Material Merchant Wholesalers	X	0.5034	0.3310
3121	Beverage Manufacturing		0.5029	0.0000
4931	Warehousing and Storage	X	0.5028	0.4821
1129	Other Animal Production		0.5022	0.2398
4247	Petroleum and Petroleum Products Merchant Wholesalers	X	0.5021	0.7853
3327	Machine Shops; Turned Product; and Screw, Nut, and Bolt Manufacturing	X	0.5019	0.0000
5322	Consumer Goods Rental	X	0.5019	0.5955
5615	Travel Arrangement and Reservation Services	X	0.5009	0.8712
2371	Utility System Construction	X	0.5001	0.2325
1114	Greenhouse, Nursery, and Floriculture Production		0.4992	0.4459
5629	Remediation and Other Waste Management Services	X	0.4985	0.4699
6214	Outpatient Care Centers	X	0.4965	0.6996
6112	Junior Colleges		0.4962	0.9199
5416	Management, Scientific, and Technical Consulting Services	X	0.4954	0.4602
5223	Activities Related to Credit Intermediation	X	0.4952	0.9486
1133	Logging	X	0.4940	0.4611
5259	Other Investment Pools and Funds	X	0.4933	0.7304
7114	Agents and Managers for Artists, Athletes, Entertainers, and Other Public Figures		0.4931	0.9236
3119	Other Food Manufacturing	X	0.4925	0.1256
5221	Depository Credit Intermediation	X	0.4923	0.9163
6215	Medical and Diagnostic Laboratories	X	0.4915	0.7164

Table 4: Industries with High Desirability and Compatibility Index Scores (Index > .40)

NAICS3	Description	Count
111	Crop Production	5
112	Animal Production and Aquaculture	2
113	Forest and Logging	1
114	Fishing, Hunting and Trapping	2
211	Oil and Gas Extraction	1
212	Mining (except Oil and Gas)	2
213	Support Activities for Mining	1
221	Utilities	2
236	Construction of Buildings	1
237	Heavy and Civil Engineering Construction	3
238	Specialty Trade Contractors	3
312	Beverage and Tobacco Product Manufacturing	1
313	Textile Mills	2
314	Textile Product Mills	1
316	Leather and Allied Product Manufacturing	1
322	Paper Manufacturing	1
327	Nonmetallic Mineral Product Manufacturing	1
331	Primary Metal Manufacturing	1
333	Machinery Manufacturing	1
334	Computer and Electronic Product Manufacturing	1
337	Furniture and Related Product Manufacturing	1
423	Merchant Wholesalers, Durable Goods	5
424	Merchant Wholesalers, Nondurable Goods	7
441	Motor Vehicle and Parts Dealers	1
442	Furniture and Home Furnishings Stores	2
443	Electronics and Appliance Stores	1
444	Building Material and Garden Equipment and Supplies Dealers	1
445	Food and Beverage Stores	2
446	Health and Personal Care Stores	1
448	Clothing and Clothing Accessories Stores	1
451	Sporting Goods, Hobby, Musical Instrument, and Book Stores	1
453	Miscellaneous Store Retailers	1
454	Nonstore Retailers	3
481	Air Transportation	2
482	Rail Transportation	1
483	Water Transportation	1
484	Truck Transportation	1
485	Transit and Ground Passenger Transportation	4
486	Pipeline Transportation	2
487	Scenic and Sightseeing Transportation	3
488	Support Activities for Transportation	3
493	Warehousing and Storage	1
511	Publishing Industries	1

512	Motion Picture and Sound Recording Industries	2
515	Broadcasting	1
517	Telecommunications	1
518	Data Processing, Hosting, and Related Services	2
519	Other Information Services	1
522	Credit Intermediation and Related Activities	3
523	Securities, Commodity Contracts, and Other Financial Investments and Related Activities	3
524	Insurance Carriers and Related Activities	2
525	Funds, Trusts, and Other Financial Vehicles	2
531	Real Estate	3
532	Rental and Leasing Services	2
533	Lessors of Nonfinancial Intangible Assets	1
541	Professional, Scientific, and Technical Services	6
551	Management of Companies and Enterprises	1
561	Administrative and Support Services	5
562	Waste Management and Remediation Services	3
611	Educational Services	5
621	Ambulatory Health Care Services	3
623	Nursing and Residential Care Facilities	4
624	Social Assistance	3
711	Performing Arts, Spectator Sports, and Related Industries	1
712	Museums, Historical Sites, and Similar Institutions	1
713	Amusement, Gambling, and Recreation Industries	1
721	Accommodation	2
722	Food Services and Drinking Places	1
811	Repair and Maintenance	1
812	Personal and Laundry Services	1
813	Religious, Grantmaking, Civic, Professional, and Similar Organizations	4
926	Administration of Economic Programs	1

Table 5: Los Alamos County, NM Target Industries

NAICS4	Description	Existing	DI	CI
1114	Greenhouse, Nursery, and Floriculture Production		0.4992	0.4459
2211	Electric Power Generation, Transmission and Distribution	X	0.7099	0.5365
2362	Nonresidential Building Construction	X	0.4576	0.5584
2373	Highway, Street, and Bridge Construction	X	0.4575	0.9357
3333	Commercial and Service Industry Machinery Manufacturing	X	0.4887	0.5734
3341	Computer and Peripheral Equipment Manufacturing		0.6299	0.4717
4871	Scenic and Sightseeing Transportation, Land	X	0.4291	0.6711
5121	Motion Picture and Video Industries	X	0.5845	0.6181
5179	Other Telecommunications		0.7534	0.9569
5182	Data Processing, Hosting, and Related Services	X	0.5239	0.8414
5191	Other Information Services	X	0.5869	0.6135
5414	Specialized Design Services		0.5632	0.4116
5415	Computer Systems Design and Related Services	X	0.5272	0.4370
5416	Management, Scientific, and Technical Consulting Services	X	0.4954	0.4602
5419	Other Professional, Scientific, and Technical Services	X	0.5805	0.5485
5615	Travel Arrangement and Reservation Services	X	0.5009	0.8712
6113	Colleges, Universities, and Professional Schools	X	0.5286	0.9550
6116	Other Schools and Instruction	X	0.4149	0.9555
6117	Educational Support Services	X	0.4207	0.9441
6214	Outpatient Care Centers	X	0.4965	0.6996
6215	Medical and Diagnostic Laboratories	X	0.4915	0.7164
6231	Nursing Care Facilities (Skilled Nursing Facilities)	X	0.4320	0.9557
6232	Residential Intellectual and Developmental Disability, Mental Health, and Substance Abuse Facilities	X	0.4418	0.9365
6233	Continuing Care Retirement Communities and Assisted Living Facilities for the Elderly	X	0.4367	0.8699
6241	Individual and Family Services	X	0.4024	0.9535
6243	Vocational Rehabilitation Services	X	0.4415	0.9326
7139	Other Amusement and Recreation Industries	X	0.4085	0.7402

Table 6: Industries with High Desirability Index Scores (DI > .40)

NAICS4	Description	Existing	DI	CI
2212	Natural Gas Distribution		0.7982	0.2321
3344	Semiconductor and Other Electronic Component Manufacturing		0.7970	0.1845
5179	Other Telecommunications		0.7534	0.9569
4869	Other Pipeline Transportation		0.7416	0.9126
3241	Petroleum and Coal Products Manufacturing	X	0.7400	0.3731
4862	Pipeline Transportation of Natural Gas		0.7344	0.0000
3254	Pharmaceutical and Medicine Manufacturing		0.7281	0.0000
2211	Electric Power Generation, Transmission and Distribution	X	0.7099	0.5365
4861	Pipeline Transportation of Crude Oil		0.7098	0.9795
3256	Soap, Cleaning Compound, and Toilet Preparation Manufacturing		0.7052	0.1040
4244	Grocery and Related Product Merchant Wholesalers		0.6959	0.4158
5152	Cable and Other Subscription Programming		0.6755	0.3886
3345	Navigational, Measuring, Electromedical, and Control Instruments Manufacturing		0.6722	0.1428
3252	Resin, Synthetic Rubber, and Artificial and Synthetic Fibers and Filaments Manufacturing		0.6652	0.2675
4821	Rail Transportation		0.6615	0.4778
4242	Drugs and Druggists' Sundries Merchant Wholesalers		0.6447	0.4945
3315	Foundries		0.6445	0.1681
3251	Basic Chemical Manufacturing		0.6443	0.1552
3255	Paint, Coating, and Adhesive Manufacturing		0.6411	0.0598
3313	Alumina and Aluminum Production and Processing		0.6371	0.0618
3253	Pesticide, Fertilizer, and Other Agricultural Chemical Manufacturing		0.6363	0.2309
3341	Computer and Peripheral Equipment Manufacturing		0.6299	0.4717
3273	Cement and Concrete Product Manufacturing		0.6296	0.2247
3115	Dairy Product Manufacturing		0.6278	0.3143
3353	Electrical Equipment Manufacturing		0.6248	0.2846
3312	Steel Product Manufacturing from Purchased Steel		0.6150	0.6098
3339	Other General Purpose Machinery Manufacturing		0.6115	0.0884
2121	Coal Mining		0.6111	0.4245
3331	Agriculture, Construction, and Mining Machinery Manufacturing		0.6064	0.2299
4231	Motor Vehicle and Motor Vehicle Parts and Supplies Merchant Wholesalers		0.6036	0.4806
3342	Communications Equipment Manufacturing	X	0.6028	0.3961
3112	Grain and Oilseed Milling		0.6012	0.3575
5417	Scientific Research and Development Services	X	0.6008	0.3877
3116	Animal Slaughtering and Processing		0.5994	0.1342
3343	Audio and Video Equipment Manufacturing		0.5960	0.2850
5241	Insurance Carriers	X	0.5947	0.9628
3221	Pulp, Paper, and Paperboard Mills		0.5919	0.2315
3346	Manufacturing and Reproducing Magnetic and Optical Media		0.5903	0.2749
3364	Aerospace Product and Parts Manufacturing		0.5892	0.3357
3361	Motor Vehicle Manufacturing		0.5875	0.1358
5191	Other Information Services	X	0.5869	0.6135
5121	Motion Picture and Video Industries	X	0.5845	0.6181
3111	Animal Food Manufacturing		0.5831	0.0860
3113	Sugar and Confectionery Product Manufacturing	X	0.5814	0.0954
5111	Newspaper, Periodical, Book, and Directory Publishers	X	0.5811	0.4155
5419	Other Professional, Scientific, and Technical Services	X	0.5805	0.5485
3336	Engine, Turbine, and Power Transmission Equipment Manufacturing		0.5783	0.0713
3314	Nonferrous Metal (except Aluminum) Production and Processing	X	0.5751	0.1400
3222	Converted Paper Product Manufacturing		0.5727	0.4010

Table 6: Industries with High Desirability Index Scores (DI > .40)

NAICS4	Description	Existing	DI	CI
3212	Veneer, Plywood, and Engineered Wood Product Manufacturing		0.5723	0.1405
3332	Industrial Machinery Manufacturing		0.5721	0.1360
3114	Fruit and Vegetable Preserving and Specialty Food Manufacturing		0.5708	0.0000
1122	Hog and Pig Farming		0.5682	0.9810
5321	Automotive Equipment Rental and Leasing		0.5661	0.0000
3391	Medical Equipment and Supplies Manufacturing		0.5650	0.2922
5122	Sound Recording Industries		0.5639	0.5261
3363	Motor Vehicle Parts Manufacturing		0.5637	0.1187
3274	Lime and Gypsum Product Manufacturing		0.5633	0.1551
5414	Specialized Design Services		0.5632	0.4116
3279	Other Nonmetallic Mineral Product Manufacturing		0.5626	0.4177
2123	Nonmetallic Mineral Mining and Quarrying	X	0.5616	0.3472
3328	Coating, Engraving, Heat Treating, and Allied Activities		0.5613	0.2864
3117	Seafood Product Preparation and Packaging		0.5609	0.2100
2111	Oil and Gas Extraction	X	0.5605	0.6203
3325	Hardware Manufacturing		0.5599	0.2599
4248	Beer, Wine, and Distilled Alcoholic Beverage Merchant Wholesalers	X	0.5596	0.5382
3311	Iron and Steel Mills and Ferroalloy Manufacturing		0.5589	0.0000
5239	Other Financial Investment Activities	X	0.5584	0.9215
2122	Metal Ore Mining		0.5580	0.9035
5173	Wired and Wireless Telecommunications Carriers	X	0.5570	0.8605
3259	Other Chemical Product and Preparation Manufacturing	X	0.5562	0.2613
3211	Sawmills and Wood Preservation	X	0.5539	0.1192
5242	Agencies, Brokerages, and Other Insurance Related Activities	X	0.5488	0.9284
3322	Cutlery and Handtool Manufacturing		0.5483	0.2177
9261	Administration of Economic Programs		0.5483	0.7062
5331	Lessors of Nonfinancial Intangible Assets (except Copyrighted Works)	X	0.5470	0.9400
3362	Motor Vehicle Body and Trailer Manufacturing		0.5462	0.0970
1141	Fishing		0.5460	0.6498
3122	Tobacco Manufacturing		0.5452	0.8068
4236	Household Appliances and Electrical and Electronic Goods Merchant Wholesalers	X	0.5452	0.4026
3365	Railroad Rolling Stock Manufacturing		0.5441	0.2509
1112	Vegetable and Melon Farming		0.5391	0.5448
5413	Architectural, Engineering, and Related Services	X	0.5388	0.3730
4241	Paper and Paper Product Merchant Wholesalers	X	0.5384	0.6092
3219	Other Wood Product Manufacturing		0.5381	0.1052
4249	Miscellaneous Nondurable Goods Merchant Wholesalers	X	0.5378	0.5597
5418	Advertising, Public Relations, and Related Services	X	0.5359	0.3445
4811	Scheduled Air Transportation	X	0.5355	0.5641
3271	Clay Product and Refractory Manufacturing		0.5342	0.3391
1142	Hunting and Trapping		0.5321	0.9469
2361	Residential Building Construction	X	0.5319	0.2001
5151	Radio and Television Broadcasting	X	0.5314	0.9613
4832	Inland Water Transportation	X	0.5309	0.9374
8133	Social Advocacy Organizations	X	0.5304	0.5535
4243	Apparel, Piece Goods, and Notions Merchant Wholesalers	X	0.5302	0.4232
6113	Colleges, Universities, and Professional Schools	X	0.5286	0.9550
4812	Nonscheduled Air Transportation	X	0.5284	0.5224
5415	Computer Systems Design and Related Services	X	0.5272	0.4370

Table 6: Industries with High Desirability Index Scores (DI > .40)

NAICS4	Description	Existing	DI	CI
5231	Securities and Commodity Contracts Intermediation and Brokerage	X	0.5251	0.7078
3352	Household Appliance Manufacturing		0.5250	0.1895
3326	Spring and Wire Product Manufacturing		0.5242	0.1484
5182	Data Processing, Hosting, and Related Services	X	0.5239	0.8414
3335	Metalworking Machinery Manufacturing		0.5233	0.0955
3321	Forging and Stamping		0.5230	0.0000
3399	Other Miscellaneous Manufacturing	X	0.5225	0.1700
4246	Chemical and Allied Products Merchant Wholesalers	X	0.5219	0.2234
4234	Professional and Commercial Equipment and Supplies Merchant Wholesalers	X	0.5208	0.4141
3262	Rubber Product Manufacturing		0.5203	0.3963
3323	Architectural and Structural Metals Manufacturing		0.5192	0.0853
1125	Aquaculture		0.5190	0.4113
3334	Ventilation, Heating, Air-Conditioning, and Commercial Refrigeration Equipment Manufacturing		0.5189	0.1394
4237	Hardware, and Plumbing and Heating Equipment and Supplies Merchant Wholesalers	X	0.5184	0.2197
4233	Lumber and Other Construction Materials Merchant Wholesalers	X	0.5174	0.3420
2383	Building Finishing Contractors	X	0.5169	0.0000
4238	Machinery, Equipment, and Supplies Merchant Wholesalers	X	0.5158	0.1848
2372	Land Subdivision	X	0.5155	0.6695
3272	Glass and Glass Product Manufacturing		0.5137	0.1707
3351	Electric Lighting Equipment Manufacturing		0.5136	0.3495
4235	Metal and Mineral (except Petroleum) Merchant Wholesalers	X	0.5127	0.4668
1124	Sheep and Goat Farming		0.5110	0.3403
3379	Other Furniture Related Product Manufacturing		0.5109	0.3608
3359	Other Electrical Equipment and Component Manufacturing	X	0.5101	0.2119
3329	Other Fabricated Metal Product Manufacturing		0.5067	0.3099
5511	Management of Companies and Enterprises	X	0.5061	0.5581
3366	Ship and Boat Building		0.5051	0.1496
3324	Boiler, Tank, and Shipping Container Manufacturing		0.5035	0.1421
4245	Farm Product Raw Material Merchant Wholesalers	X	0.5034	0.3310
3121	Beverage Manufacturing		0.5029	0.0000
4931	Warehousing and Storage	X	0.5028	0.4821
1129	Other Animal Production		0.5022	0.2398
4247	Petroleum and Petroleum Products Merchant Wholesalers	X	0.5021	0.7853
3327	Machine Shops; Turned Product; and Screw, Nut, and Bolt Manufacturing	X	0.5019	0.0000
5322	Consumer Goods Rental	X	0.5019	0.5955
5615	Travel Arrangement and Reservation Services	X	0.5009	0.8712
2371	Utility System Construction	X	0.5001	0.2325
1114	Greenhouse, Nursery, and Floriculture Production		0.4992	0.4459
5629	Remediation and Other Waste Management Services	X	0.4985	0.4699
6214	Outpatient Care Centers	X	0.4965	0.6996
6112	Junior Colleges		0.4962	0.9199
5416	Management, Scientific, and Technical Consulting Services	X	0.4954	0.4602
5223	Activities Related to Credit Intermediation	X	0.4952	0.9486
1133	Logging	X	0.4940	0.4611
5259	Other Investment Pools and Funds	X	0.4933	0.7304
7114	Agents and Managers for Artists, Athletes, Entertainers, and Other Public Figures		0.4931	0.9236
3119	Other Food Manufacturing	X	0.4925	0.1256
5221	Depository Credit Intermediation	X	0.4923	0.9163
6215	Medical and Diagnostic Laboratories	X	0.4915	0.7164

Table 6: Industries with High Desirability Index Scores (DI > .40)

NAICS4	Description	Existing	DI	CI
3131	Fiber, Yarn, and Thread Mills		0.4908	0.4735
3372	Office Furniture (including Fixtures) Manufacturing		0.4908	0.1693
3333	Commercial and Service Industry Machinery Manufacturing	X	0.4887	0.5734
7112	Spectator Sports		0.4878	0.0000
4239	Miscellaneous Durable Goods Merchant Wholesalers	X	0.4876	0.5201
5112	Software Publishers	X	0.4868	0.8456
1113	Fruit and Tree Nut Farming		0.4865	0.7132
2382	Building Equipment Contractors	X	0.4850	0.9390
2381	Foundation, Structure, and Building Exterior Contractors	X	0.4838	0.4690
3133	Textile and Fabric Finishing and Fabric Coating Mills		0.4829	0.1502
2213	Water, Sewage and Other Systems	X	0.4818	0.4911
5222	Nondepository Credit Intermediation	X	0.4813	0.9342
4889	Other Support Activities for Transportation	X	0.4808	0.4972
7113	Promoters of Performing Arts, Sports, and Similar Events		0.4795	0.0000
5622	Waste Treatment and Disposal	X	0.4781	0.5231
3118	Bakeries and Tortilla Manufacturing	X	0.4772	0.0000
4885	Freight Transportation Arrangement	X	0.4771	0.0522
4431	Electronics and Appliance Stores	X	0.4761	0.6453
1121	Cattle Ranching and Farming		0.4760	0.2118
4881	Support Activities for Air Transportation	X	0.4756	0.3144
1111	Oilseed and Grain Farming		0.4753	0.9254
4841	General Freight Trucking	X	0.4739	0.5364
5251	Insurance and Employee Benefit Funds	X	0.4732	0.6934
3169	Other Leather and Allied Product Manufacturing		0.4707	0.1370
5313	Activities Related to Real Estate	X	0.4703	0.9492
4882	Support Activities for Rail Transportation	X	0.4670	0.9305
5312	Offices of Real Estate Agents and Brokers	X	0.4663	0.6985
3149	Other Textile Product Mills		0.4647	0.0000
8131	Religious Organizations	X	0.4635	0.9850
4541	Electronic Shopping and Mail-Order Houses	X	0.4617	0.6276
8139	Business, Professional, Labor, Political, and Similar Organizations	X	0.4612	0.8830
5323	General Rental Centers	X	0.4602	0.9231
3152	Cut and Sew Apparel Manufacturing		0.4600	0.3478
2131	Support Activities for Mining	X	0.4598	0.8144
2379	Other Heavy and Civil Engineering Construction	X	0.4598	0.4394
1119	Other Crop Farming		0.4581	0.4268
5311	Lessors of Real Estate	X	0.4580	0.7983
2362	Nonresidential Building Construction	X	0.4576	0.5584
2373	Highway, Street, and Bridge Construction	X	0.4575	0.9357
3162	Footwear Manufacturing		0.4557	0.5707
3161	Leather and Hide Tanning and Finishing		0.4545	0.3872
5232	Securities and Commodity Exchanges	X	0.4543	0.9542
4411	Automobile Dealers	X	0.4538	0.1540
5619	Other Support Services	X	0.4538	0.4135
7212	RV (Recreational Vehicle) Parks and Recreational Camps	X	0.4516	0.7016
3132	Fabric Mills		0.4515	0.5730
8132	Grantmaking and Giving Services	X	0.4509	0.8326
4511	Sporting Goods, Hobby, and Musical Instrument Stores	X	0.4501	0.0000
3369	Other Transportation Equipment Manufacturing	X	0.4496	0.3147

Table 6: Industries with High Desirability Index Scores (DI > .40)

NAICS4	Description	Existing	DI	CI
3159	Apparel Accessories and Other Apparel Manufacturing	X	0.4478	0.1861
3151	Apparel Knitting Mills		0.4476	0.0000
5411	Legal Services	X	0.4475	0.7574
8114	Personal and Household Goods Repair and Maintenance	X	0.4475	0.4676
4872	Scenic and Sightseeing Transportation, Water	X	0.4472	0.9507
2389	Other Specialty Trade Contractors	X	0.4465	0.7752
6244	Child Day Care Services	X	0.4451	0.8503
8122	Death Care Services		0.4426	0.8775
6232	Residential Intellectual and Developmental Disability, Mental Health, and Substance Abuse Facili	X	0.4418	0.9365
6243	Vocational Rehabilitation Services	X	0.4415	0.9326
6212	Offices of Dentists	X	0.4414	0.9386
3231	Printing and Related Support Activities	X	0.4406	0.1196
4412	Other Motor Vehicle Dealers	X	0.4396	0.7631
5611	Office Administrative Services	X	0.4390	0.3208
4859	Other Transit and Ground Passenger Transportation	X	0.4388	0.7638
3371	Household and Institutional Furniture and Kitchen Cabinet Manufacturing	X	0.4383	0.5472
4441	Building Material and Supplies Dealers	X	0.4383	0.5960
4879	Scenic and Sightseeing Transportation, Other	X	0.4369	0.8967
5412	Accounting, Tax Preparation, Bookkeeping, and Payroll Services	X	0.4369	0.9606
4452	Specialty Food Stores	X	0.4367	0.5299
6233	Continuing Care Retirement Communities and Assisted Living Facilities for the Elderly	X	0.4367	0.8699
3141	Textile Furnishings Mills		0.4366	0.9304
7213	Rooming and Boarding Houses, Dormitories, and Workers' Camps	X	0.4362	0.7720
4543	Direct Selling Establishments	X	0.4351	0.4680
3261	Plastics Product Manufacturing	X	0.4342	0.2316
4442	Lawn and Garden Equipment and Supplies Stores	X	0.4342	0.1763
6231	Nursing Care Facilities (Skilled Nursing Facilities)	X	0.4320	0.9557
4451	Grocery Stores	X	0.4314	0.4601
4481	Clothing Stores	X	0.4310	0.4738
4422	Home Furnishings Stores	X	0.4303	0.4667
4512	Book Stores and News Dealers	X	0.4301	0.9536
7225	Restaurants and Other Eating Places	X	0.4297	0.6211
4871	Scenic and Sightseeing Transportation, Land	X	0.4291	0.6711
5614	Business Support Services	X	0.4287	0.4115
6111	Elementary and Secondary Schools	X	0.4287	0.3607
4421	Furniture Stores	X	0.4284	0.9314
8129	Other Personal Services	X	0.4280	0.6982
5621	Waste Collection	X	0.4240	0.9460
6117	Educational Support Services	X	0.4207	0.9441
5616	Investigation and Security Services	X	0.4203	0.9476
7121	Museums, Historical Sites, and Similar Institutions	X	0.4203	0.9485
4883	Support Activities for Water Transportation	X	0.4194	0.6266
4855	Charter Bus Industry	X	0.4172	0.9530
5613	Employment Services	X	0.4161	0.6883
4851	Urban Transit Systems	X	0.4154	0.6254
6116	Other Schools and Instruction	X	0.4149	0.9555
4542	Vending Machine Operators	X	0.4132	0.7200
6114	Business Schools and Computer and Management Training	X	0.4119	0.9582
4539	Other Miscellaneous Store Retailers	X	0.4117	0.0000

Table 6: Industries with High Desirability Index Scores (DI > .40)

NAICS4	Description	Existing	DI	CI
8113	Commercial and Industrial Machinery and Equipment (except Automotive and Electronic) Repair	X	0.4105	0.0000
7139	Other Amusement and Recreation Industries	X	0.4085	0.7402
7223	Special Food Services	X	0.4080	0.2962
4531	Florists	X	0.4070	0.4728
4852	Interurban and Rural Bus Transportation	X	0.4054	0.9556
6239	Other Residential Care Facilities	X	0.4041	0.7388
4461	Health and Personal Care Stores	X	0.4025	0.5739
6241	Individual and Family Services	X	0.4024	0.9535

Table 7: Industries with High Compatibility Index Scores (CI > .40)

NAICS4	Description	Existing	DI	CI
4853	Taxi and Limousine Service	X	0.3555	0.9978
8134	Civic and Social Organizations	X	0.3943	0.9856
8131	Religious Organizations	X	0.4635	0.9850
1122	Hog and Pig Farming		0.5682	0.9810
4861	Pipeline Transportation of Crude Oil		0.7098	0.9795
4533	Used Merchandise Stores	X	0.3897	0.9674
5241	Insurance Carriers	X	0.5947	0.9628
5151	Radio and Television Broadcasting	X	0.5314	0.9613
5412	Accounting, Tax Preparation, Bookkeeping, and Payroll Services	X	0.4369	0.9606
6114	Business Schools and Computer and Management Training	X	0.4119	0.9582
5179	Other Telecommunications		0.7534	0.9569
6231	Nursing Care Facilities (Skilled Nursing Facilities)	X	0.4320	0.9557
4852	Interurban and Rural Bus Transportation	X	0.4054	0.9556
6116	Other Schools and Instruction	X	0.4149	0.9555
6113	Colleges, Universities, and Professional Schools	X	0.5286	0.9550
5232	Securities and Commodity Exchanges	X	0.4543	0.9542
4512	Book Stores and News Dealers	X	0.4301	0.9536
6241	Individual and Family Services	X	0.4024	0.9535
4855	Charter Bus Industry	X	0.4172	0.9530
4921	Couriers and Express Delivery Services	X	0.3690	0.9522
4922	Local Messengers and Local Delivery	X	0.3540	0.9520
5617	Services to Buildings and Dwellings	X	0.3662	0.9510
4872	Scenic and Sightseeing Transportation, Water	X	0.4472	0.9507
5313	Activities Related to Real Estate	X	0.4703	0.9492
5223	Activities Related to Credit Intermediation	X	0.4952	0.9486
7121	Museums, Historical Sites, and Similar Institutions	X	0.4203	0.9485
5616	Investigation and Security Services	X	0.4203	0.9476
1142	Hunting and Trapping		0.5321	0.9469
5621	Waste Collection	X	0.4240	0.9460
6117	Educational Support Services	X	0.4207	0.9441
6216	Home Health Care Services	X	0.3951	0.9432
8121	Personal Care Services	X	0.3950	0.9406
5331	Lessors of Nonfinancial Intangible Assets (except Copyrighted Works)	X	0.5470	0.9400
2382	Building Equipment Contractors	X	0.4850	0.9390
6212	Offices of Dentists	X	0.4414	0.9386
4832	Inland Water Transportation	X	0.5309	0.9374
6232	Residential Intellectual and Developmental Disability, Mental Health, and Substance Abuse Fac	X	0.4418	0.9365
2373	Highway, Street, and Bridge Construction	X	0.4575	0.9357
5222	Nondepository Credit Intermediation	X	0.4813	0.9342
6243	Vocational Rehabilitation Services	X	0.4415	0.9326
4421	Furniture Stores	X	0.4284	0.9314
4882	Support Activities for Rail Transportation	X	0.4670	0.9305
3141	Textile Furnishings Mills		0.4366	0.9304
5242	Agencies, Brokerages, and Other Insurance Related Activities	X	0.5488	0.9284
7131	Amusement Parks and Arcades	X	0.3927	0.9264
1111	Oilseed and Grain Farming		0.4753	0.9254
7114	Agents and Managers for Artists, Athletes, Entertainers, and Other Public Figures		0.4931	0.9236
5323	General Rental Centers	X	0.4602	0.9231
4523	General Merchandise Stores, including Warehouse Clubs and Supercenters	X	0.3955	0.9226

Table 7: Industries with High Compatibility Index Scores (CI > .40)

NAICS4	Description	Existing	DI	CI
4482	Shoe Stores	X	0.3884	0.9225
5239	Other Financial Investment Activities	X	0.5584	0.9215
6112	Junior Colleges		0.4962	0.9199
5221	Depository Credit Intermediation	X	0.4923	0.9163
8123	Drycleaning and Laundry Services	X	0.3933	0.9127
4869	Other Pipeline Transportation		0.7416	0.9126
2122	Metal Ore Mining		0.5580	0.9035
4879	Scenic and Sightseeing Transportation, Other	X	0.4369	0.8967
8139	Business, Professional, Labor, Political, and Similar Organizations	X	0.4612	0.8830
8122	Death Care Services		0.4426	0.8775
6242	Community Food and Housing, and Emergency and Other Relief Services	X	0.3648	0.8731
5615	Travel Arrangement and Reservation Services	X	0.5009	0.8712
6233	Continuing Care Retirement Communities and Assisted Living Facilities for the Elderly	X	0.4367	0.8699
5173	Wired and Wireless Telecommunications Carriers	X	0.5570	0.8605
6244	Child Day Care Services	X	0.4451	0.8503
5112	Software Publishers	X	0.4868	0.8456
5182	Data Processing, Hosting, and Related Services	X	0.5239	0.8414
8132	Grantmaking and Giving Services	X	0.4509	0.8326
2131	Support Activities for Mining	X	0.4598	0.8144
3122	Tobacco Manufacturing		0.5452	0.8068
5311	Lessors of Real Estate	X	0.4580	0.7983
6115	Technical and Trade Schools	X	0.3987	0.7956
1153	Support Activities for Forestry	X	0.3117	0.7940
4247	Petroleum and Petroleum Products Merchant Wholesalers	X	0.5021	0.7853
2389	Other Specialty Trade Contractors	X	0.4465	0.7752
7213	Rooming and Boarding Houses, Dormitories, and Workers' Camps	X	0.4362	0.7720
4859	Other Transit and Ground Passenger Transportation	X	0.4388	0.7638
4412	Other Motor Vehicle Dealers	X	0.4396	0.7631
5411	Legal Services	X	0.4475	0.7574
8112	Electronic and Precision Equipment Repair and Maintenance	X	0.3926	0.7405
7139	Other Amusement and Recreation Industries	X	0.4085	0.7402
6239	Other Residential Care Facilities	X	0.4041	0.7388
5259	Other Investment Pools and Funds	X	0.4933	0.7304
4542	Vending Machine Operators	X	0.4132	0.7200
6215	Medical and Diagnostic Laboratories	X	0.4915	0.7164
1113	Fruit and Tree Nut Farming		0.4865	0.7132
5231	Securities and Commodity Contracts Intermediation and Brokerage	X	0.5251	0.7078
9261	Administration of Economic Programs		0.5483	0.7062
7212	RV (Recreational Vehicle) Parks and Recreational Camps	X	0.4516	0.7016
6214	Outpatient Care Centers	X	0.4965	0.6996
5312	Offices of Real Estate Agents and Brokers	X	0.4663	0.6985
8129	Other Personal Services	X	0.4280	0.6982
5251	Insurance and Employee Benefit Funds	X	0.4732	0.6934
5613	Employment Services	X	0.4161	0.6883
4871	Scenic and Sightseeing Transportation, Land	X	0.4291	0.6711
2372	Land Subdivision	X	0.5155	0.6695
1141	Fishing		0.5460	0.6498
4431	Electronics and Appliance Stores	X	0.4761	0.6453
4541	Electronic Shopping and Mail-Order Houses	X	0.4617	0.6276

Table 7: Industries with High Compatibility Index Scores (CI > .40)

NAICS4	Description	Existing	DI	CI
4883	Support Activities for Water Transportation	X	0.4194	0.6266
4851	Urban Transit Systems	X	0.4154	0.6254
7225	Restaurants and Other Eating Places	X	0.4297	0.6211
2111	Oil and Gas Extraction	X	0.5605	0.6203
5121	Motion Picture and Video Industries	X	0.5845	0.6181
5191	Other Information Services	X	0.5869	0.6135
3312	Steel Product Manufacturing from Purchased Steel		0.6150	0.6098
4241	Paper and Paper Product Merchant Wholesalers	X	0.5384	0.6092
4441	Building Material and Supplies Dealers	X	0.4383	0.5960
5322	Consumer Goods Rental	X	0.5019	0.5955
1131	Timber Tract Operations	X	0.3819	0.5863
4461	Health and Personal Care Stores	X	0.4025	0.5739
3333	Commercial and Service Industry Machinery Manufacturing	X	0.4887	0.5734
3132	Fabric Mills		0.4515	0.5730
3162	Footwear Manufacturing		0.4557	0.5707
4811	Scheduled Air Transportation	X	0.5355	0.5641
4249	Miscellaneous Nondurable Goods Merchant Wholesalers	X	0.5378	0.5597
2362	Nonresidential Building Construction	X	0.4576	0.5584
5511	Management of Companies and Enterprises	X	0.5061	0.5581
8133	Social Advocacy Organizations	X	0.5304	0.5535
5419	Other Professional, Scientific, and Technical Services	X	0.5805	0.5485
3371	Household and Institutional Furniture and Kitchen Cabinet Manufacturing	X	0.4383	0.5472
4251	Wholesale Electronic Markets and Agents and Brokers	X	0.3580	0.5465
1112	Vegetable and Melon Farming		0.5391	0.5448
4248	Beer, Wine, and Distilled Alcoholic Beverage Merchant Wholesalers	X	0.5596	0.5382
2211	Electric Power Generation, Transmission and Distribution	X	0.7099	0.5365
4841	General Freight Trucking	X	0.4739	0.5364
4452	Specialty Food Stores	X	0.4367	0.5299
5122	Sound Recording Industries		0.5639	0.5261
5622	Waste Treatment and Disposal	X	0.4781	0.5231
4812	Nonscheduled Air Transportation	X	0.5284	0.5224
4239	Miscellaneous Durable Goods Merchant Wholesalers	X	0.4876	0.5201
4889	Other Support Activities for Transportation	X	0.4808	0.4972
4242	Drugs and Druggists' Sundries Merchant Wholesalers		0.6447	0.4945
2213	Water, Sewage and Other Systems	X	0.4818	0.4911
4931	Warehousing and Storage	X	0.5028	0.4821
4231	Motor Vehicle and Motor Vehicle Parts and Supplies Merchant Wholesalers		0.6036	0.4806
4821	Rail Transportation		0.6615	0.4778
4481	Clothing Stores	X	0.4310	0.4738
3131	Fiber, Yarn, and Thread Mills		0.4908	0.4735
4531	Florists	X	0.4070	0.4728
3341	Computer and Peripheral Equipment Manufacturing		0.6299	0.4717
5629	Remediation and Other Waste Management Services	X	0.4985	0.4699
2381	Foundation, Structure, and Building Exterior Contractors	X	0.4838	0.4690
4543	Direct Selling Establishments	X	0.4351	0.4680
8114	Personal and Household Goods Repair and Maintenance	X	0.4475	0.4676
4235	Metal and Mineral (except Petroleum) Merchant Wholesalers	X	0.5127	0.4668
4422	Home Furnishings Stores	X	0.4303	0.4667
1133	Logging	X	0.4940	0.4611

Table 7: Industries with High Compatibility Index Scores (CI > .40)

NAICS4	Description	Existing	DI	CI
5416	Management, Scientific, and Technical Consulting Services	X	0.4954	0.4602
4451	Grocery Stores	X	0.4314	0.4601
1114	Greenhouse, Nursery, and Floriculture Production		0.4992	0.4459
2379	Other Heavy and Civil Engineering Construction	X	0.4598	0.4394
5415	Computer Systems Design and Related Services	X	0.5272	0.4370
1119	Other Crop Farming		0.4581	0.4268
2121	Coal Mining		0.6111	0.4245
4243	Apparel, Piece Goods, and Notions Merchant Wholesalers	X	0.5302	0.4232
3279	Other Nonmetallic Mineral Product Manufacturing		0.5626	0.4177
4244	Grocery and Related Product Merchant Wholesalers		0.6959	0.4158
5111	Newspaper, Periodical, Book, and Directory Publishers	X	0.5811	0.4155
4234	Professional and Commercial Equipment and Supplies Merchant Wholesalers	X	0.5208	0.4141
5619	Other Support Services	X	0.4538	0.4135
5414	Specialized Design Services		0.5632	0.4116
5614	Business Support Services	X	0.4287	0.4115
1125	Aquaculture		0.5190	0.4113
4236	Household Appliances and Electrical and Electronic Goods Merchant Wholesalers	X	0.5452	0.4026
3222	Converted Paper Product Manufacturing		0.5727	0.4010

Table 8: Compatibility Index and Desirability Index Scores - All Industries

NAICS4	Description	Existing	DI	CI
1111	Oilseed and Grain Farming		0.4753	0.9254
1112	Vegetable and Melon Farming		0.5391	0.5448
1113	Fruit and Tree Nut Farming		0.4865	0.7132
1114	Greenhouse, Nursery, and Floriculture Production		0.4992	0.4459
1119	Other Crop Farming		0.4581	0.4268
1121	Cattle Ranching and Farming		0.4760	0.2118
1122	Hog and Pig Farming		0.5682	0.9810
1124	Sheep and Goat Farming		0.5110	0.3403
1125	Aquaculture		0.5190	0.4113
1129	Other Animal Production		0.5022	0.2398
1131	Timber Tract Operations	X	0.3819	0.5863
1132	Forest Nurseries and Gathering of Forest Products	X	0.3543	0.3795
1133	Logging	X	0.4940	0.4611
1141	Fishing		0.5460	0.6498
1142	Hunting and Trapping		0.5321	0.9469
1151	Support Activities for Crop Production	X	0.3088	0.3425
1152	Support Activities for Animal Production	X	0.3103	0.3450
1153	Support Activities for Forestry	X	0.3117	0.7940
2111	Oil and Gas Extraction	X	0.5605	0.6203
2121	Coal Mining		0.6111	0.4245
2122	Metal Ore Mining		0.5580	0.9035
2123	Nonmetallic Mineral Mining and Quarrying	X	0.5616	0.3472
2131	Support Activities for Mining	X	0.4598	0.8144
2211	Electric Power Generation, Transmission and Distribution	X	0.7099	0.5365
2212	Natural Gas Distribution		0.7982	0.2321
2213	Water, Sewage and Other Systems	X	0.4818	0.4911
2361	Residential Building Construction	X	0.5319	0.2001
2362	Nonresidential Building Construction	X	0.4576	0.5584
2371	Utility System Construction	X	0.5001	0.2325
2372	Land Subdivision	X	0.5155	0.6695
2373	Highway, Street, and Bridge Construction	X	0.4575	0.9357
2379	Other Heavy and Civil Engineering Construction	X	0.4598	0.4394
2381	Foundation, Structure, and Building Exterior Contractors	X	0.4838	0.4690
2382	Building Equipment Contractors	X	0.4850	0.9390
2383	Building Finishing Contractors	X	0.5169	0.0000
2389	Other Specialty Trade Contractors	X	0.4465	0.7752
3111	Animal Food Manufacturing		0.5831	0.0860
3112	Grain and Oilseed Milling		0.6012	0.3575
3113	Sugar and Confectionery Product Manufacturing	X	0.5814	0.0954
3114	Fruit and Vegetable Preserving and Specialty Food Manufacturing		0.5708	0.0000
3115	Dairy Product Manufacturing		0.6278	0.3143
3116	Animal Slaughtering and Processing		0.5994	0.1342
3117	Seafood Product Preparation and Packaging		0.5609	0.2100
3118	Bakeries and Tortilla Manufacturing	X	0.4772	0.0000
3119	Other Food Manufacturing	X	0.4925	0.1256
3121	Beverage Manufacturing		0.5029	0.0000
3122	Tobacco Manufacturing		0.5452	0.8068
3131	Fiber, Yarn, and Thread Mills		0.4908	0.4735
3132	Fabric Mills		0.4515	0.5730

Table 8: Compatibility Index and Desirability Index Scores - All Industries

NAICS4	Description	Existing	DI	CI
3133	Textile and Fabric Finishing and Fabric Coating Mills		0.4829	0.1502
3141	Textile Furnishings Mills		0.4366	0.9304
3149	Other Textile Product Mills		0.4647	0.0000
3151	Apparel Knitting Mills		0.4476	0.0000
3152	Cut and Sew Apparel Manufacturing		0.4600	0.3478
3159	Apparel Accessories and Other Apparel Manufacturing	X	0.4478	0.1861
3161	Leather and Hide Tanning and Finishing		0.4545	0.3872
3162	Footwear Manufacturing		0.4557	0.5707
3169	Other Leather and Allied Product Manufacturing		0.4707	0.1370
3211	Sawmills and Wood Preservation	X	0.5539	0.1192
3212	Veneer, Plywood, and Engineered Wood Product Manufacturing		0.5723	0.1405
3219	Other Wood Product Manufacturing		0.5381	0.1052
3221	Pulp, Paper, and Paperboard Mills		0.5919	0.2315
3222	Converted Paper Product Manufacturing		0.5727	0.4010
3231	Printing and Related Support Activities	X	0.4406	0.1196
3241	Petroleum and Coal Products Manufacturing	X	0.7400	0.3731
3251	Basic Chemical Manufacturing		0.6443	0.1552
3252	Resin, Synthetic Rubber, and Artificial and Synthetic Fibers and Filaments Manufacturing		0.6652	0.2675
3253	Pesticide, Fertilizer, and Other Agricultural Chemical Manufacturing		0.6363	0.2309
3254	Pharmaceutical and Medicine Manufacturing		0.7281	0.0000
3255	Paint, Coating, and Adhesive Manufacturing		0.6411	0.0598
3256	Soap, Cleaning Compound, and Toilet Preparation Manufacturing		0.7052	0.1040
3259	Other Chemical Product and Preparation Manufacturing	X	0.5562	0.2613
3261	Plastics Product Manufacturing	X	0.4342	0.2316
3262	Rubber Product Manufacturing		0.5203	0.3963
3271	Clay Product and Refractory Manufacturing		0.5342	0.3391
3272	Glass and Glass Product Manufacturing		0.5137	0.1707
3273	Cement and Concrete Product Manufacturing		0.6296	0.2247
3274	Lime and Gypsum Product Manufacturing		0.5633	0.1551
3279	Other Nonmetallic Mineral Product Manufacturing		0.5626	0.4177
3311	Iron and Steel Mills and Ferroalloy Manufacturing		0.5589	0.0000
3312	Steel Product Manufacturing from Purchased Steel		0.6150	0.6098
3313	Alumina and Aluminum Production and Processing		0.6371	0.0618
3314	Nonferrous Metal (except Aluminum) Production and Processing	X	0.5751	0.1400
3315	Foundries		0.6445	0.1681
3321	Forging and Stamping		0.5230	0.0000
3322	Cutlery and Handtool Manufacturing		0.5483	0.2177
3323	Architectural and Structural Metals Manufacturing		0.5192	0.0853
3324	Boiler, Tank, and Shipping Container Manufacturing		0.5035	0.1421
3325	Hardware Manufacturing		0.5599	0.2599
3326	Spring and Wire Product Manufacturing		0.5242	0.1484
3327	Machine Shops; Turned Product; and Screw, Nut, and Bolt Manufacturing	X	0.5019	0.0000
3328	Coating, Engraving, Heat Treating, and Allied Activities		0.5613	0.2864
3329	Other Fabricated Metal Product Manufacturing		0.5067	0.3099
3331	Agriculture, Construction, and Mining Machinery Manufacturing		0.6064	0.2299
3332	Industrial Machinery Manufacturing		0.5721	0.1360
3333	Commercial and Service Industry Machinery Manufacturing	X	0.4887	0.5734
3334	Ventilation, Heating, Air-Conditioning, and Commercial Refrigeration Equipment Manufacturin		0.5189	0.1394
3335	Metalworking Machinery Manufacturing		0.5233	0.0955

Table 8: Compatibility Index and Desirability Index Scores - All Industries

NAICS4	Description	Existing	DI	CI
3336	Engine, Turbine, and Power Transmission Equipment Manufacturing		0.5783	0.0713
3339	Other General Purpose Machinery Manufacturing		0.6115	0.0884
3341	Computer and Peripheral Equipment Manufacturing		0.6299	0.4717
3342	Communications Equipment Manufacturing	X	0.6028	0.3961
3343	Audio and Video Equipment Manufacturing		0.5960	0.2850
3344	Semiconductor and Other Electronic Component Manufacturing		0.7970	0.1845
3345	Navigational, Measuring, Electromedical, and Control Instruments Manufacturing		0.6722	0.1428
3346	Manufacturing and Reproducing Magnetic and Optical Media		0.5903	0.2749
3351	Electric Lighting Equipment Manufacturing		0.5136	0.3495
3352	Household Appliance Manufacturing		0.5250	0.1895
3353	Electrical Equipment Manufacturing		0.6248	0.2846
3359	Other Electrical Equipment and Component Manufacturing	X	0.5101	0.2119
3361	Motor Vehicle Manufacturing		0.5875	0.1358
3362	Motor Vehicle Body and Trailer Manufacturing		0.5462	0.0970
3363	Motor Vehicle Parts Manufacturing		0.5637	0.1187
3364	Aerospace Product and Parts Manufacturing		0.5892	0.3357
3365	Railroad Rolling Stock Manufacturing		0.5441	0.2509
3366	Ship and Boat Building		0.5051	0.1496
3369	Other Transportation Equipment Manufacturing	X	0.4496	0.3147
3371	Household and Institutional Furniture and Kitchen Cabinet Manufacturing	X	0.4383	0.5472
3372	Office Furniture (including Fixtures) Manufacturing		0.4908	0.1693
3379	Other Furniture Related Product Manufacturing		0.5109	0.3608
3391	Medical Equipment and Supplies Manufacturing		0.5650	0.2922
3399	Other Miscellaneous Manufacturing	X	0.5225	0.1700
4231	Motor Vehicle and Motor Vehicle Parts and Supplies Merchant Wholesalers		0.6036	0.4806
4233	Lumber and Other Construction Materials Merchant Wholesalers	X	0.5174	0.3420
4234	Professional and Commercial Equipment and Supplies Merchant Wholesalers	X	0.5208	0.4141
4235	Metal and Mineral (except Petroleum) Merchant Wholesalers	X	0.5127	0.4668
4236	Household Appliances and Electrical and Electronic Goods Merchant Wholesalers	X	0.5452	0.4026
4237	Hardware, and Plumbing and Heating Equipment and Supplies Merchant Wholesalers	X	0.5184	0.2197
4238	Machinery, Equipment, and Supplies Merchant Wholesalers	X	0.5158	0.1848
4239	Miscellaneous Durable Goods Merchant Wholesalers	X	0.4876	0.5201
4241	Paper and Paper Product Merchant Wholesalers	X	0.5384	0.6092
4242	Drugs and Druggists' Sundries Merchant Wholesalers		0.6447	0.4945
4243	Apparel, Piece Goods, and Notions Merchant Wholesalers	X	0.5302	0.4232
4244	Grocery and Related Product Merchant Wholesalers		0.6959	0.4158
4245	Farm Product Raw Material Merchant Wholesalers	X	0.5034	0.3310
4246	Chemical and Allied Products Merchant Wholesalers	X	0.5219	0.2234
4247	Petroleum and Petroleum Products Merchant Wholesalers	X	0.5021	0.7853
4248	Beer, Wine, and Distilled Alcoholic Beverage Merchant Wholesalers	X	0.5596	0.5382
4249	Miscellaneous Nondurable Goods Merchant Wholesalers	X	0.5378	0.5597
4251	Wholesale Electronic Markets and Agents and Brokers	X	0.3580	0.5465
4411	Automobile Dealers	X	0.4538	0.1540
4412	Other Motor Vehicle Dealers	X	0.4396	0.7631
4421	Furniture Stores	X	0.4284	0.9314
4422	Home Furnishings Stores	X	0.4303	0.4667
4431	Electronics and Appliance Stores	X	0.4761	0.6453
4441	Building Material and Supplies Dealers	X	0.4383	0.5960
4442	Lawn and Garden Equipment and Supplies Stores	X	0.4342	0.1763

Table 8: Compatibility Index and Desirability Index Scores - All Industries

NAICS4	Description	Existing	DI	CI
4451	Grocery Stores	X	0.4314	0.4601
4452	Specialty Food Stores	X	0.4367	0.5299
4461	Health and Personal Care Stores	X	0.4025	0.5739
4481	Clothing Stores	X	0.4310	0.4738
4482	Shoe Stores	X	0.3884	0.9225
4483	Jewelry, Luggage, and Leather Goods Stores	X	0.3874	0.0000
4511	Sporting Goods, Hobby, and Musical Instrument Stores	X	0.4501	0.0000
4512	Book Stores and News Dealers	X	0.4301	0.9536
4523	General Merchandise Stores, including Warehouse Clubs and Supercenters	X	0.3955	0.9226
4531	Florists	X	0.4070	0.4728
4533	Used Merchandise Stores	X	0.3897	0.9674
4539	Other Miscellaneous Store Retailers	X	0.4117	0.0000
4541	Electronic Shopping and Mail-Order Houses	X	0.4617	0.6276
4542	Vending Machine Operators	X	0.4132	0.7200
4543	Direct Selling Establishments	X	0.4351	0.4680
4811	Scheduled Air Transportation	X	0.5355	0.5641
4812	Nonscheduled Air Transportation	X	0.5284	0.5224
4821	Rail Transportation		0.6615	0.4778
4832	Inland Water Transportation	X	0.5309	0.9374
4841	General Freight Trucking	X	0.4739	0.5364
4851	Urban Transit Systems	X	0.4154	0.6254
4852	Interurban and Rural Bus Transportation	X	0.4054	0.9556
4853	Taxi and Limousine Service	X	0.3555	0.9978
4855	Charter Bus Industry	X	0.4172	0.9530
4859	Other Transit and Ground Passenger Transportation	X	0.4388	0.7638
4861	Pipeline Transportation of Crude Oil		0.7098	0.9795
4862	Pipeline Transportation of Natural Gas		0.7344	0.0000
4869	Other Pipeline Transportation		0.7416	0.9126
4871	Scenic and Sightseeing Transportation, Land	X	0.4291	0.6711
4872	Scenic and Sightseeing Transportation, Water	X	0.4472	0.9507
4879	Scenic and Sightseeing Transportation, Other	X	0.4369	0.8967
4881	Support Activities for Air Transportation	X	0.4756	0.3144
4882	Support Activities for Rail Transportation	X	0.4670	0.9305
4883	Support Activities for Water Transportation	X	0.4194	0.6266
4885	Freight Transportation Arrangement	X	0.4771	0.0522
4889	Other Support Activities for Transportation	X	0.4808	0.4972
4921	Couriers and Express Delivery Services	X	0.3690	0.9522
4922	Local Messengers and Local Delivery	X	0.3540	0.9520
4931	Warehousing and Storage	X	0.5028	0.4821
5111	Newspaper, Periodical, Book, and Directory Publishers	X	0.5811	0.4155
5112	Software Publishers	X	0.4868	0.8456
5121	Motion Picture and Video Industries	X	0.5845	0.6181
5122	Sound Recording Industries		0.5639	0.5261
5151	Radio and Television Broadcasting	X	0.5314	0.9613
5152	Cable and Other Subscription Programming		0.6755	0.3886
5173	Wired and Wireless Telecommunications Carriers	X	0.5570	0.8605
5179	Other Telecommunications		0.7534	0.9569
5182	Data Processing, Hosting, and Related Services	X	0.5239	0.8414
5191	Other Information Services	X	0.5869	0.6135

Table 8: Compatibility Index and Desirability Index Scores - All Industries

NAICS4	Description	Existing	DI	CI
5221	Depository Credit Intermediation	X	0.4923	0.9163
5222	Nondepository Credit Intermediation	X	0.4813	0.9342
5223	Activities Related to Credit Intermediation	X	0.4952	0.9486
5231	Securities and Commodity Contracts Intermediation and Brokerage	X	0.5251	0.7078
5232	Securities and Commodity Exchanges	X	0.4543	0.9542
5239	Other Financial Investment Activities	X	0.5584	0.9215
5241	Insurance Carriers	X	0.5947	0.9628
5242	Agencies, Brokerages, and Other Insurance Related Activities	X	0.5488	0.9284
5251	Insurance and Employee Benefit Funds	X	0.4732	0.6934
5259	Other Investment Pools and Funds	X	0.4933	0.7304
5311	Lessors of Real Estate	X	0.4580	0.7983
5312	Offices of Real Estate Agents and Brokers	X	0.4663	0.6985
5313	Activities Related to Real Estate	X	0.4703	0.9492
5321	Automotive Equipment Rental and Leasing		0.5661	0.0000
5322	Consumer Goods Rental	X	0.5019	0.5955
5323	General Rental Centers	X	0.4602	0.9231
5331	Lessors of Nonfinancial Intangible Assets (except Copyrighted Works)	X	0.5470	0.9400
5411	Legal Services	X	0.4475	0.7574
5412	Accounting, Tax Preparation, Bookkeeping, and Payroll Services	X	0.4369	0.9606
5413	Architectural, Engineering, and Related Services	X	0.5388	0.3730
5414	Specialized Design Services		0.5632	0.4116
5415	Computer Systems Design and Related Services	X	0.5272	0.4370
5416	Management, Scientific, and Technical Consulting Services	X	0.4954	0.4602
5417	Scientific Research and Development Services	X	0.6008	0.3877
5418	Advertising, Public Relations, and Related Services	X	0.5359	0.3445
5419	Other Professional, Scientific, and Technical Services	X	0.5805	0.5485
5511	Management of Companies and Enterprises	X	0.5061	0.5581
5611	Office Administrative Services	X	0.4390	0.3208
5613	Employment Services	X	0.4161	0.6883
5614	Business Support Services	X	0.4287	0.4115
5615	Travel Arrangement and Reservation Services	X	0.5009	0.8712
5616	Investigation and Security Services	X	0.4203	0.9476
5617	Services to Buildings and Dwellings	X	0.3662	0.9510
5619	Other Support Services	X	0.4538	0.4135
5621	Waste Collection	X	0.4240	0.9460
5622	Waste Treatment and Disposal	X	0.4781	0.5231
5629	Remediation and Other Waste Management Services	X	0.4985	0.4699
6111	Elementary and Secondary Schools	X	0.4287	0.3607
6112	Junior Colleges		0.4962	0.9199
6113	Colleges, Universities, and Professional Schools	X	0.5286	0.9550
6114	Business Schools and Computer and Management Training	X	0.4119	0.9582
6115	Technical and Trade Schools	X	0.3987	0.7956
6116	Other Schools and Instruction	X	0.4149	0.9555
6117	Educational Support Services	X	0.4207	0.9441
6212	Offices of Dentists	X	0.4414	0.9386
6214	Outpatient Care Centers	X	0.4965	0.6996
6215	Medical and Diagnostic Laboratories	X	0.4915	0.7164
6216	Home Health Care Services	X	0.3951	0.9432
6231	Nursing Care Facilities (Skilled Nursing Facilities)	X	0.4320	0.9557

Table 8: Compatibility Index and Desirability Index Scores - All Industries

NAICS4	Description	Existing	DI	CI
6232	Residential Intellectual and Developmental Disability, Mental Health, and Substance Abuse Fac	X	0.4418	0.9365
6233	Continuing Care Retirement Communities and Assisted Living Facilities for the Elderly	X	0.4367	0.8699
6239	Other Residential Care Facilities	X	0.4041	0.7388
6241	Individual and Family Services	X	0.4024	0.9535
6242	Community Food and Housing, and Emergency and Other Relief Services	X	0.3648	0.8731
6243	Vocational Rehabilitation Services	X	0.4415	0.9326
6244	Child Day Care Services	X	0.4451	0.8503
7112	Spectator Sports		0.4878	0.0000
7113	Promoters of Performing Arts, Sports, and Similar Events		0.4795	0.0000
7114	Agents and Managers for Artists, Athletes, Entertainers, and Other Public Figures		0.4931	0.9236
7121	Museums, Historical Sites, and Similar Institutions	X	0.4203	0.9485
7131	Amusement Parks and Arcades	X	0.3927	0.9264
7139	Other Amusement and Recreation Industries	X	0.4085	0.7402
7212	RV (Recreational Vehicle) Parks and Recreational Camps	X	0.4516	0.7016
7213	Rooming and Boarding Houses, Dormitories, and Workers' Camps	X	0.4362	0.7720
7223	Special Food Services	X	0.4080	0.2962
7225	Restaurants and Other Eating Places	X	0.4297	0.6211
8112	Electronic and Precision Equipment Repair and Maintenance	X	0.3926	0.7405
8113	Commercial and Industrial Machinery and Equipment (except Automotive and Electronic) Repa	X	0.4105	0.0000
8114	Personal and Household Goods Repair and Maintenance	X	0.4475	0.4676
8121	Personal Care Services	X	0.3950	0.9406
8122	Death Care Services		0.4426	0.8775
8123	Drycleaning and Laundry Services	X	0.3933	0.9127
8129	Other Personal Services	X	0.4280	0.6982
8131	Religious Organizations	X	0.4635	0.9850
8132	Grantmaking and Giving Services	X	0.4509	0.8326
8133	Social Advocacy Organizations	X	0.5304	0.5535
8134	Civic and Social Organizations	X	0.3943	0.9856
8139	Business, Professional, Labor, Political, and Similar Organizations	X	0.4612	0.8830
9261	Administration of Economic Programs		0.5483	0.7062